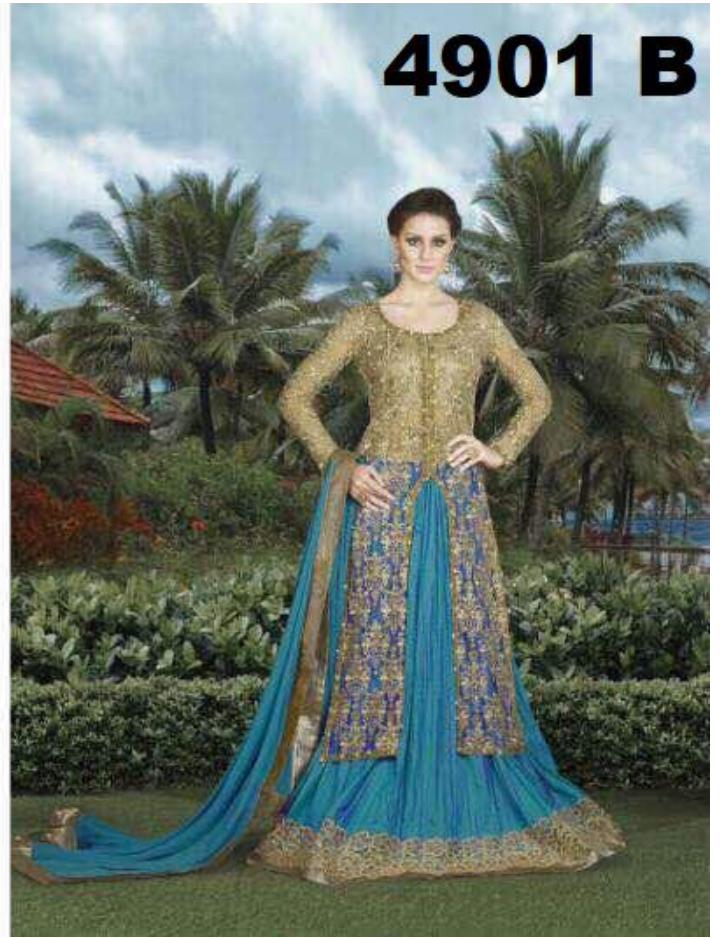




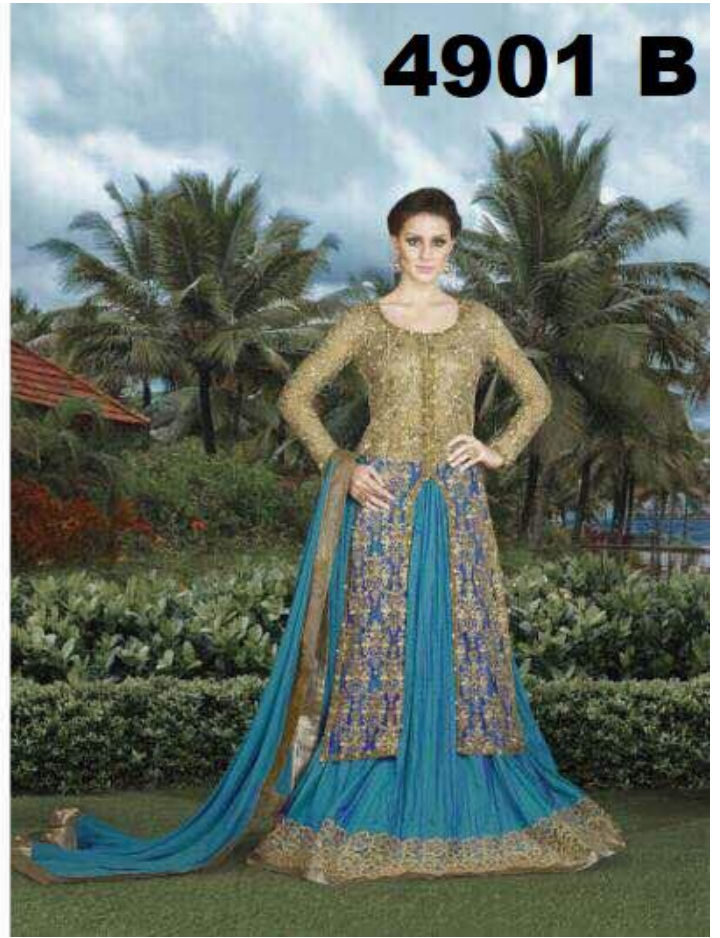
D.no. 4901 B



**4901 B**

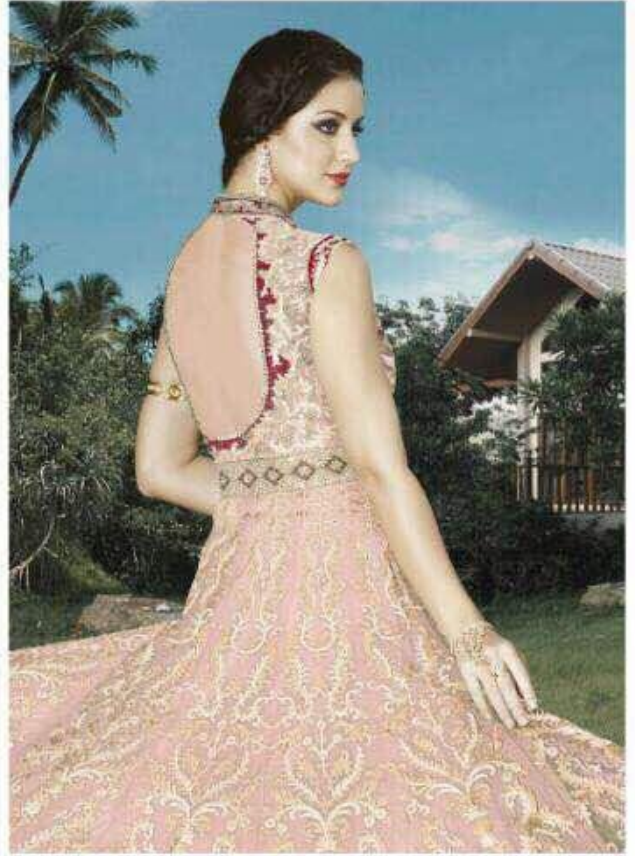
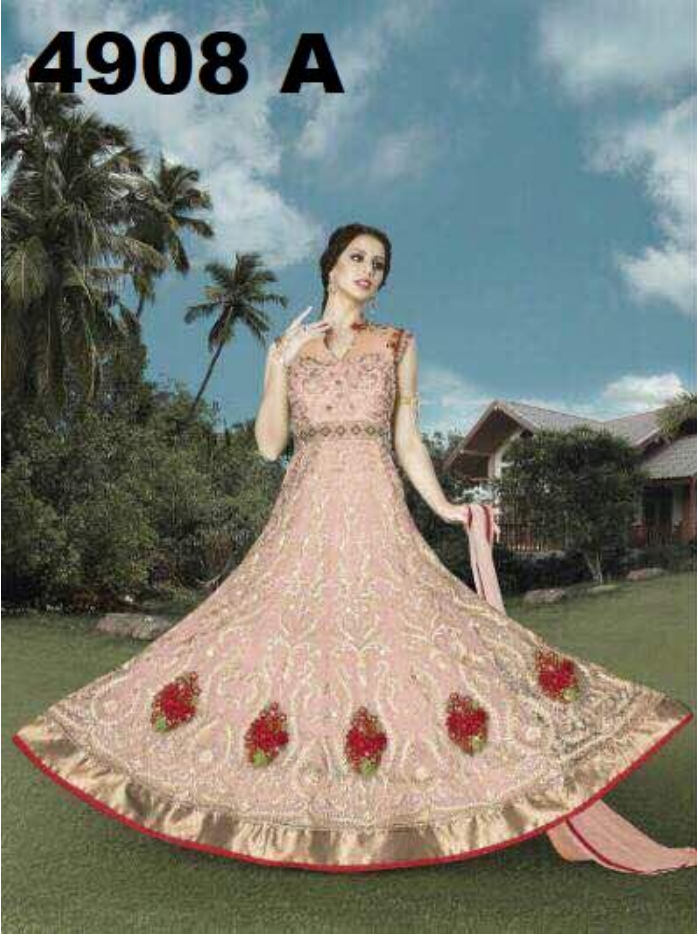


D.no. 4901 B



**4901 B**

**4908 A**



D.no. 4908 A

**4909 A**



D.No. 4909 A

**SNOW WHITE 4900 SERIES COLOURS  
RATELIST**

<b>D. NO.</b>	<b>PRICE (RS.)</b>
4909-A	3690/-
4908-A	3660/-
4901-B	3190/-
<b>TOTAL</b>	<b>Rs.10540/-</b>

**AVG. PRICE – Rs.3514/-**

**TOTAL PIECES - 3**

<b>DESIGN</b>	<b>FABRICATION DETAIL</b>	<b>P</b>
<b>4901</b>	A VERY ELEGANT EMBROIDRED TOP WITH HEAVY SLEEVES. EMBELLISHED WITH STONES SUPPORTED BY A BEAUTIFUL CRUSHED FUSHIA COLORED SILK LEHANGA. WITH CUT WORK BORDER. AND BROCADE BLOUSE WITH SATIN INNER AND CHIFFON DUPATTA.	
<b>4902</b>	A FLOWY GOWN OF SAPHIRE COLORED CRUSHED PAPER SILK SUPPORTED WITH BANARASI SILK TEXTURED YOKE COMPLEMENTING WITH ZARI BADLA & STONES. A FANCY BROCADE FABRIC FOR THE PANT WITH HALF COATED CHIFFON DUPATTA.	
<b>4903</b>	A FLOWING OLIE COLOR DRESS WITH LOOK OF HAND CRAFTED EMBRODRY. & ZARI WORK EMBELLISHED. WITH STONE ON SOFT NETT WITH A BEAUTIFUL SATIN INNER & BROAD QUILTED BORDER & CHIFFON DUPATTA.	
<b>4904</b>	A DESIGNER SILK EMBRODERED SHERWANI JACKET WITH FANCY RED COLORED TWO TONE FABRICS WITH LEHANGA. AND CHIFFON DUPATTA.	
<b>4905</b>	A BANGLORI SLIK ELEGANT BLUE YOKE JACKET EMBELLISHED WITH DIAMOND BUTTONS & ZARI EMBROEDRY SUPPORTED WITH PEACH ORANGE COLORED TWO TONE SILK FABRICS GOWN ENDING WITH FANCY ZARI BORDER AND CHIFFON DUPATTA.	
<b>4906</b>	A SUPER SOFT SPARKLED NETT GOWN WITH A CRUSHED SEQUENCE BLOUSE CRAFTED WITH ELEGANT EMBRODRY COMPLEMENTING WITH RED COLORED LYCRA AND SEQUENCE SHITTING DUPATTA.	
<b>4907</b>	A RAVISHING BRIDAL JACKET OF FANCY SILK SLUB FABRICS CRAFTED WITH ELEGANT EMBRODERY OF ZARI AND STONE WITH DAIMOUND METAL BUTTONS. COMPLEMENTING WITH FUSCHIA COLORED SILK LEHANGA AND NETT DUPATTA.	
<b>4908</b>	A BEAUTIFUL DRESS COMPLEMENTING FLOW OF CHAINSTITCH EMBRODIRED KALIS. OF OFFWHITE COLORED NETT WITH GLIMPSE OF STONES AND PEARL. AND CHIFFON DUPATTA.	
<b>4909</b>	A TRADITIONAL NAVY BLUE COLOURED GEORGETTE CRAFTED WITH ZARI CHAINSTITCH WITH CHIFFON DUPATTA.	
<b>4910</b>	A MOST ETHNIC WORK OF CHAINSTITCH ADDED WITH DIAMOND STICHTED LACES. FOR A BEAUTIFUL SHERWANI GIVING. A FUSION OF PANT AND LEHANGA. WITH CHIFFON DUPATTA.	
<b>4911</b>	A FANCY WEAVED EMERALED GREEN GOWN WITH BEATIFUL DIAMOND BROACH AND EYE CATCHING EMBRODRY WITH STONES ON THE YOKE AND CHIFFON DUPATTA.	
<b>4912</b>	A ELEGANT SUPER SOFT NETT DRESS. EMBRODRED WITH VARIATION OF SEQWINCE. SUPPORTED WITH FANCY EMBRODIRED. SEQWINCE. AND YOKE WITH BRIDAL BORDER & GOLDEN COLORED BROCADE LEHANGA & CHIFFON DUPATTA.	