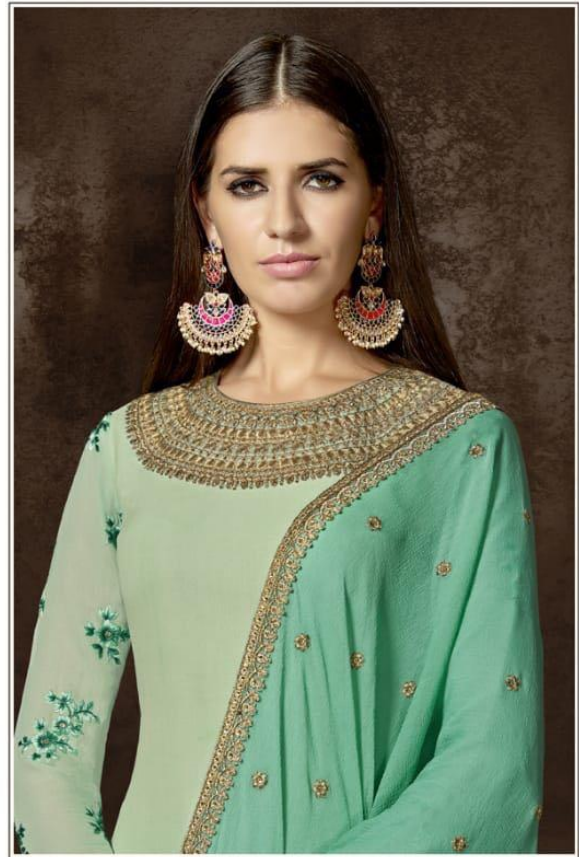



MEHREEN

105 A



105-A



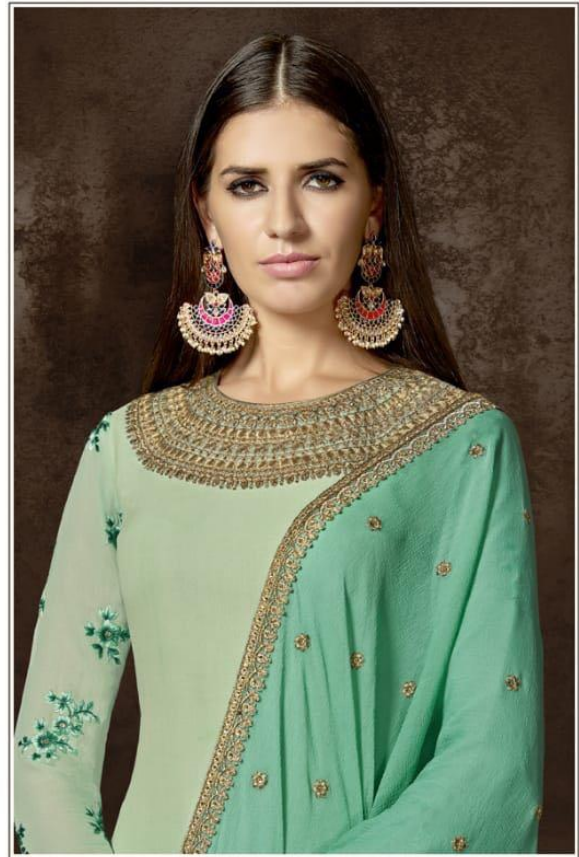
Straight suit concept in shaded Green Georgette with zari work at daaman.
Bottom in matching Santoon and dupatta in Green Chiffon.


MEHREEN

105 A



105-A



Straight suit concept in shaded Green Georgette with zari work at daaman.
Bottom in matching Santoon and dupatta in Green Chiffon.


MEHREEN

106 A



106-A



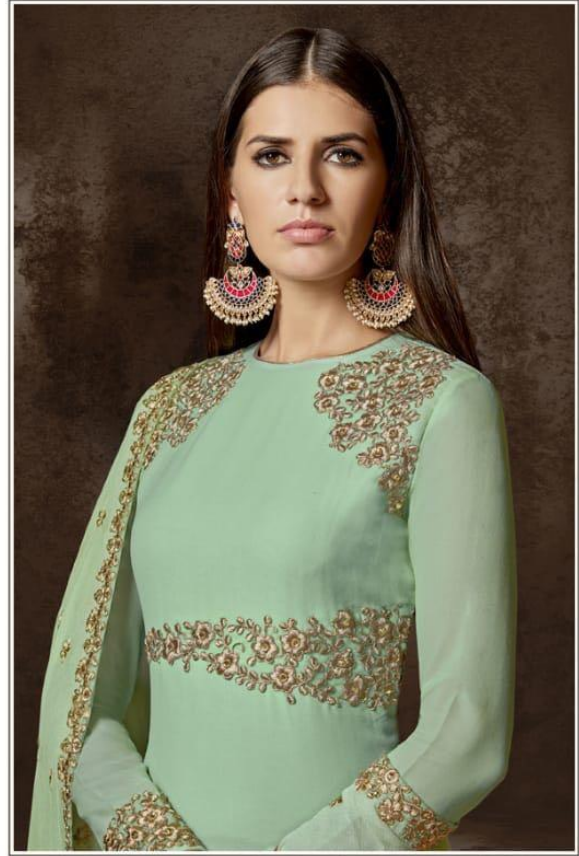
Elegant Straight suit in monotonues of Orange. Embroidery in thread and zari.
Bottom in orange Santoon and dupatta in matching Chiffon with allover buti.


MEHREEN

106 B



106-B



Elegant Straight suit in monotoes of Aqua Green colour. Embroidery in thread and zari.
Bottom in matching Santoon and dupatta in matching Chiffon with allover buti.



107 B

MEHREEN



107-B



Straight suit dress with uneven embroidery in Light Peach Georgette.
Bottom in matching Santoon and dupatta in matching Chiffon with all over buti.

M
MEHREEN

108 B



108-B



Pink Georgette straight suit dress with asymmetric embroidery pattern.
Bottom in matching santoon and dupatta in matching Chiffon respectively.